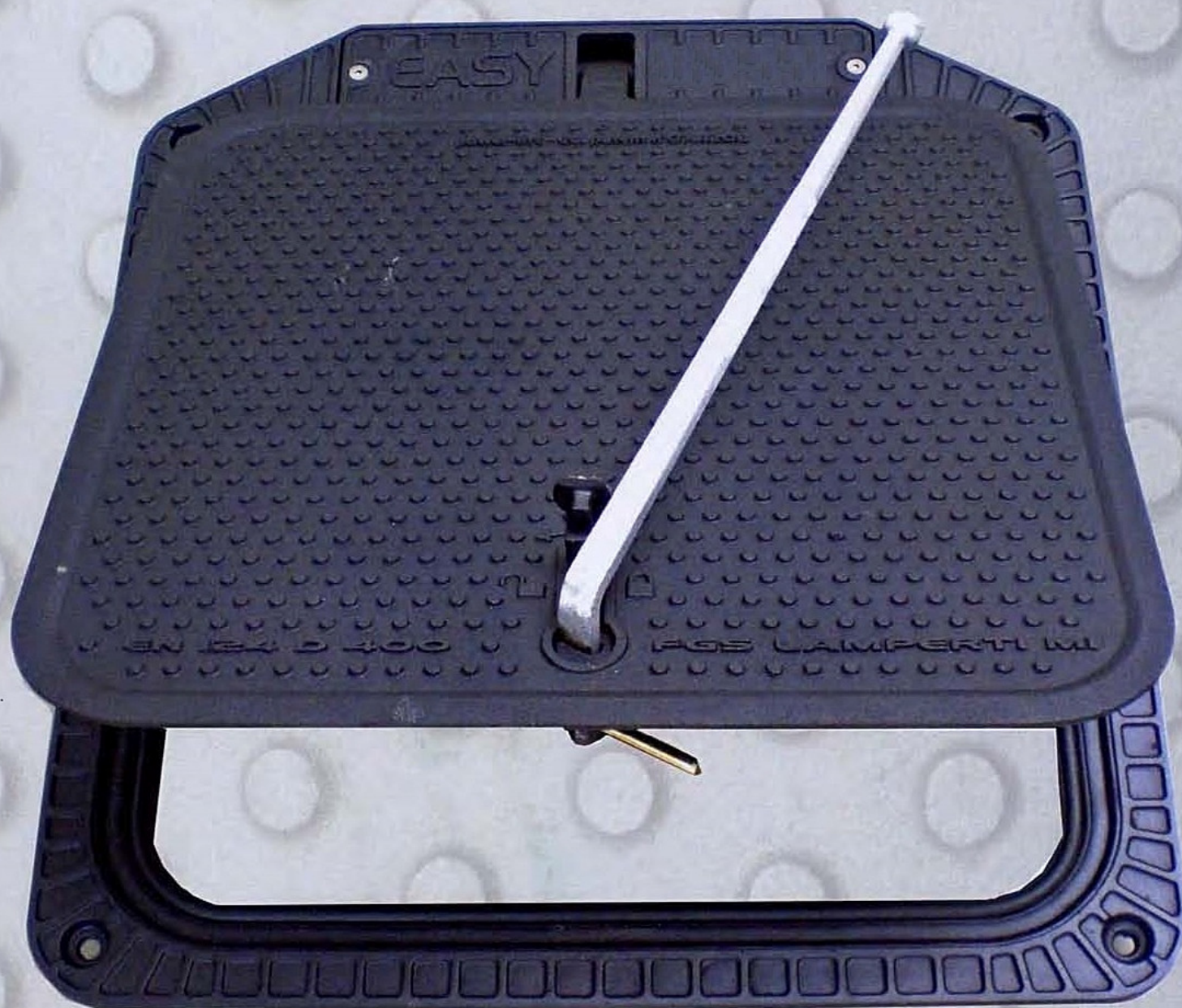


**NUOVO CLASSE D 400**

# **EASY 760**

**CHIUSINO SERVOASSISTITO A TENUTA STAGNA**



**L' ORIGINALE CHIUSINO  
SERVOASSISTITO  
DA MOLLE A TORSIONE**



Via 2 giugno 21, 20051 Limbiate - MI

Tel. 02 99050241 Fax 02 99050631

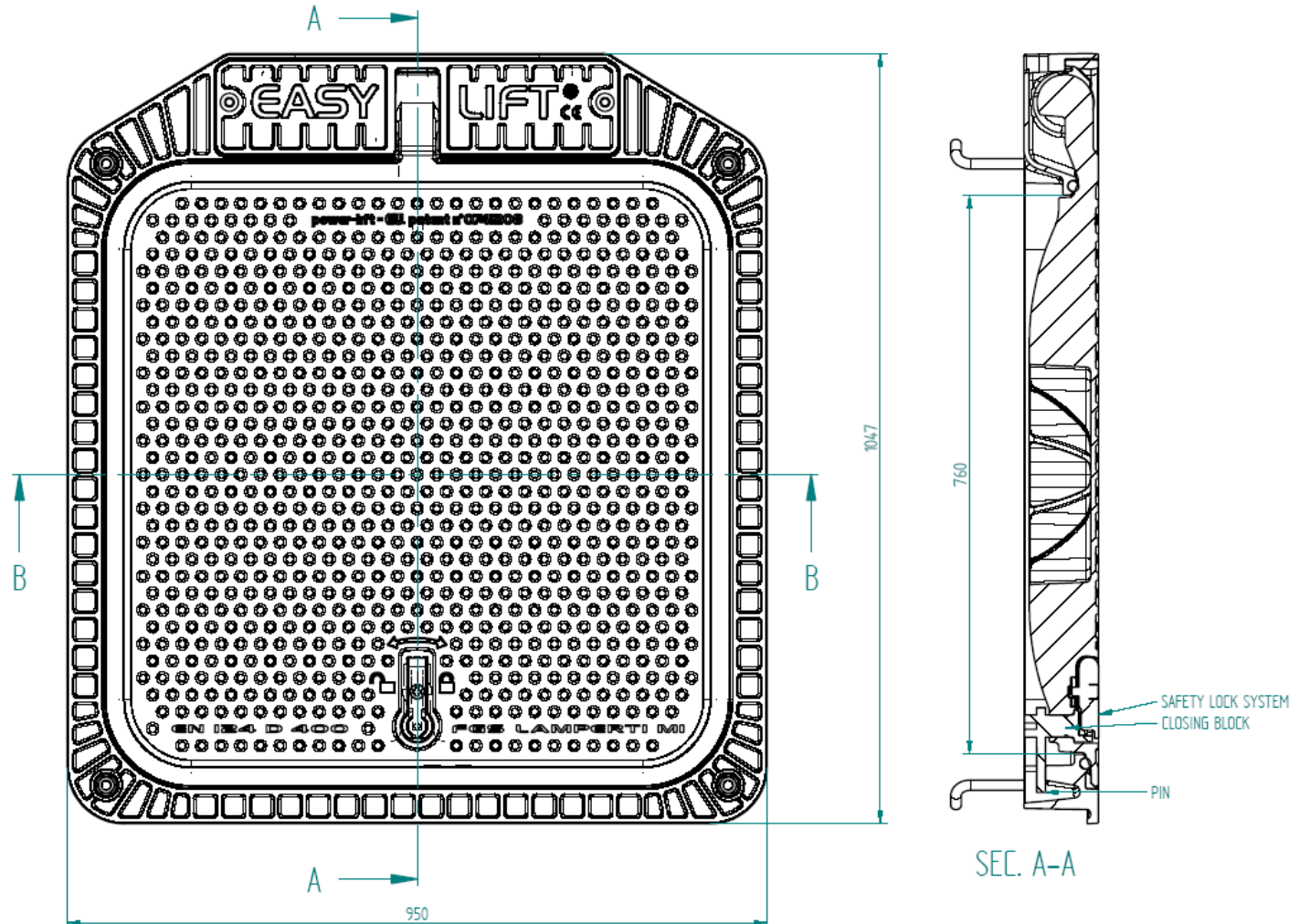
[www.fgslamperti.it](http://www.fgslamperti.it)



Via 2 Giugno, 21 – 20812 Limbiate (MB) Tel+39(0)299050241/242 Fax+39(0)299050631 –C.F. e P.I.00848950150

# NEW EASYLIFT 760D400 INOX

Access tank powerlift water tight manhole cover cast iron maden GJS 500/7 ISO 1083 in compliance with the EN 124:1995 standards class D400. Clear Opening 760x760mm misure External dimensions 950x1040mm high 101mm weight 140kg.

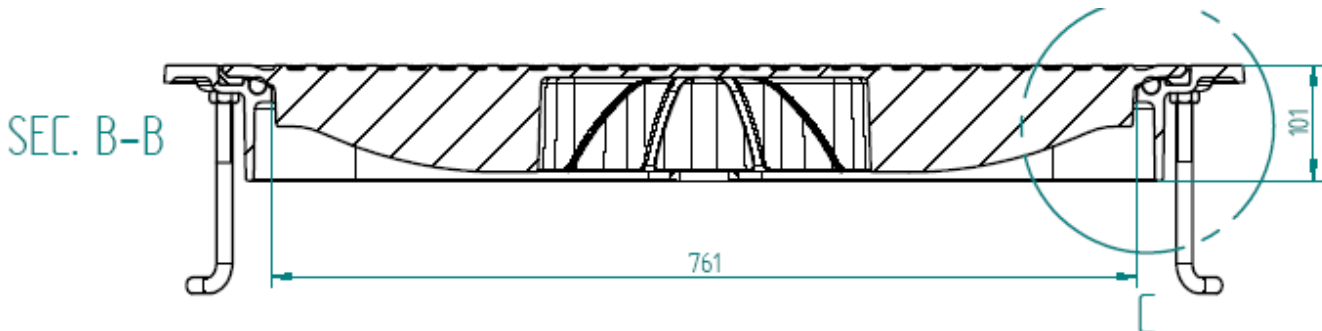


## TECHNICAL DATA:

CLEAR OPENING:	760x760 mm
EXTERNAL DIMENSION:	950x1040 mm
TOTAL HIGHT:	101 mm
TOTAL WEIGHT:	140 kg

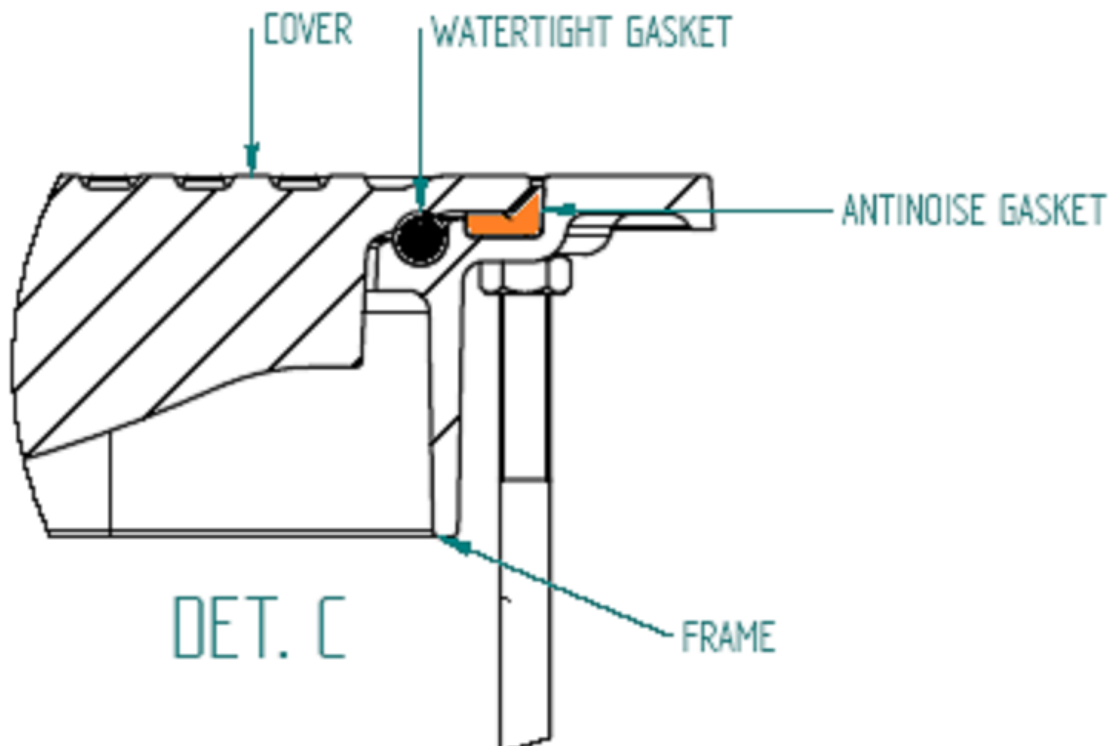
## FEATURES:

**Frame** high 101 mm top totally flat not With a flat top surface not protruding from the road floor perfectly aligned with the lid (conformed with artt.7.12 e 7.16 - UNI EN 124 1995 Standards).

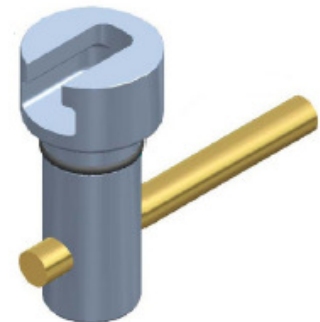


Inverted base with: anti-slip, 4 holes for the passage of tirafound or zanche for anchoring to the ground, two anti-rubber rubber gaskets and resistant to mechanical wear. Watertightness guaranteed by the sealing of the two seals that work simultaneously.

The anti-noise seal guarantees the silence of the lid when passing the vehicle and is designed to prevent dirt from creaking inside, damaging the second gasket, while remaining clean, ensures watertightness (see Det.C).



**Lid** with flat top surface and not protruding from the road floor perfectly aligned with the chassis (according to articles 7.12 and 7.16 of UNI EN 124 1995). Range over 40 tons with: anti-slip, assisted opening by two torsion springs placed on the rotation axis, locking cylinder with lock on the snap chassis, lock against accidental opening of the closing cylinder.



**Rotary closing cylinder** 90 ° in STAINLESS STEEL

designed to compress the lid on the gaskets and to secure the chassis lock.

Equipped with: enclosed enclosure enclosures for enclosed opening and closing lid; O Hermetic sealing ring; Galvanized high strength steel latch for hooking to the frame.

Bolted **cover for frame** with two M12 bolts in AISI 304 stainless steel.

Single component **anti-rust paint** with a minimum thickness of 50 µm.

**Handle** for opening and closing the lid.

**A drainage hole** in the frame prevents water from stagnating and freezing during the winter. This drainage is even more effective when connected to a 32mm diameter drain pipe before installation.

It is possible to install **a proximity sensor** on the chassis by connecting it to an alarm system indicating the opening of the cover.



KEEP GREASED THE  
LOCK PIN

## EASY LIFT 760 D400 SPECIFICATION

EASY LIFT MANHOLE COVER MUST BE BLOCKED BY 4 J-BOLTS IN CONCRETE  
WARNING: DON'T PLACE COVER WHEN CLOSED,  
KEEP COVER OPENED UNTIL CONCRETE HARDENED.  
SUGGESTION: DO NOT DISASSEMBLE COVER FROM FRAME  
IF IT IS NECESSARY, PLEASE MARK COVERS AND FRAME RESPECTIVELY.

TO DISASSEMBLE COVER FROM FRAME UNSREW THE 2 BOLTS OF SPRINGS  
LID AND PULL OUT SPRINGS LID.  
ROTATE COVER UNTIL HINGE CONNECTION TOUCH FRAME.  
LIFT COVER.  
TO ASSEMBLE COVER ON FRAME MAKE THE REVERSE OPERATION.

### CARRY ON LIKE THAT:

1. PUT EASY LIFT ON SQUARE HOLE 760 X 760 mm
2. OPEN COVER AND CENTRE FRAME ON HOLE
3. PERFORM LEVELLING AND FIX J-BOLT WITH CONCRETE AND ADJUST LEVELLING  
ACTING BY J-BOLT'S LOCK NUTS. TIGHTEN THE UPPER NUTS
4. SEAL THE EXTERNAL SIDE FRAME WITH GROUND BY TAR OR EQUIVALENT
5. CAST CONCRET AROUND THE FRAME AND PUSH IT WITH CARE UNDER THE FRAME  
FLANGE
6. CLOSE COVER WHEN CONCRETE HARDENED



WATERTIGHT KEEPING:  
EVERY TIME COVER LIFTED CLEAN GASKETS



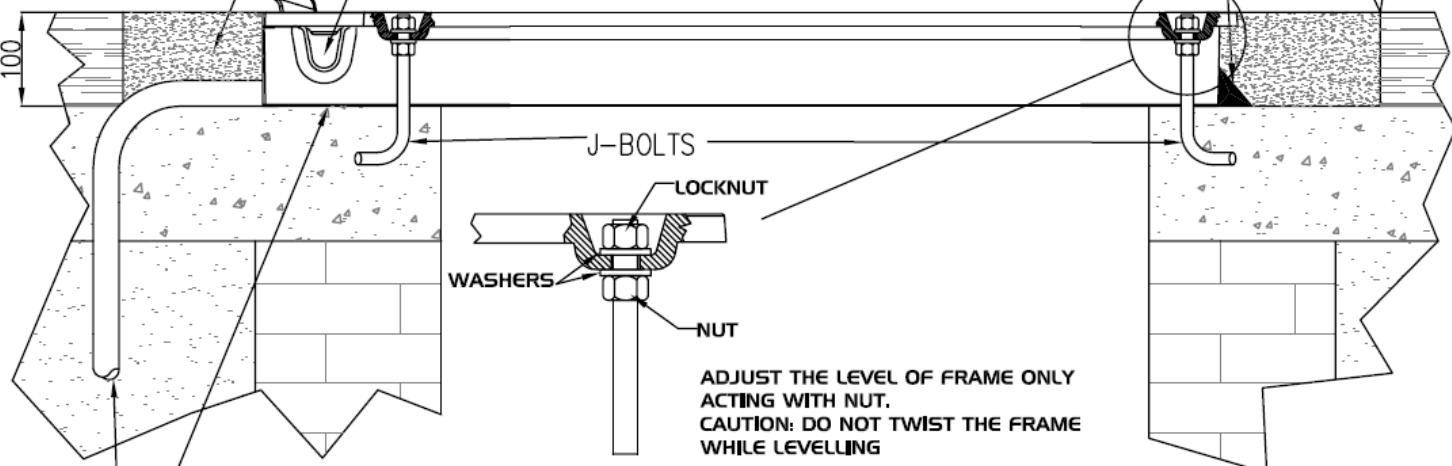
EXTERNAL FRAME SEAL

KEEP GREASED THE  
SPRINGS



CONCRETE CASTING

100



TAKE CARE TO SEAL WELL THE OPENING UNDER  
SPRINGS BOX (2 SQUARE HOLES)

DIA. 26mm DRAINAGE PIPE, CONNECT PIPE TO DRAINAGE CANAL OR IN SAND (FACULTATIVE)